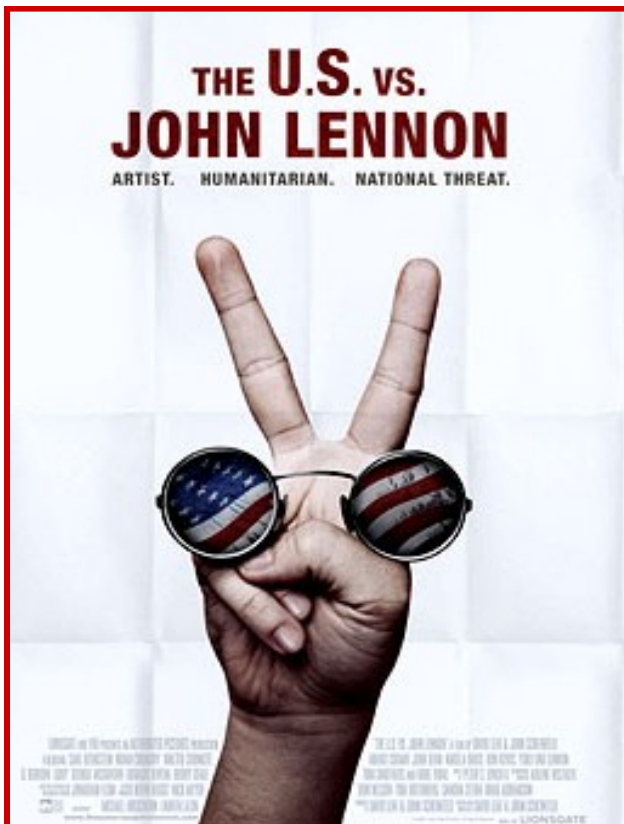


**JULY 6**  
**The U.S. vs**  
**JOHN LENNON**

This discussion will be led by Dr. Michael Kramp, Assoc Prof of English at UNC.

This documentary film focuses on a part of the music icon's life often overlooked: his politicization both during and after the Vietnam War. Incorporating insightful archival footage as well as interviews, the film traces Lennon's struggles and constraints in attempting to spread his anti-war message.

**(Rated PG-13)**



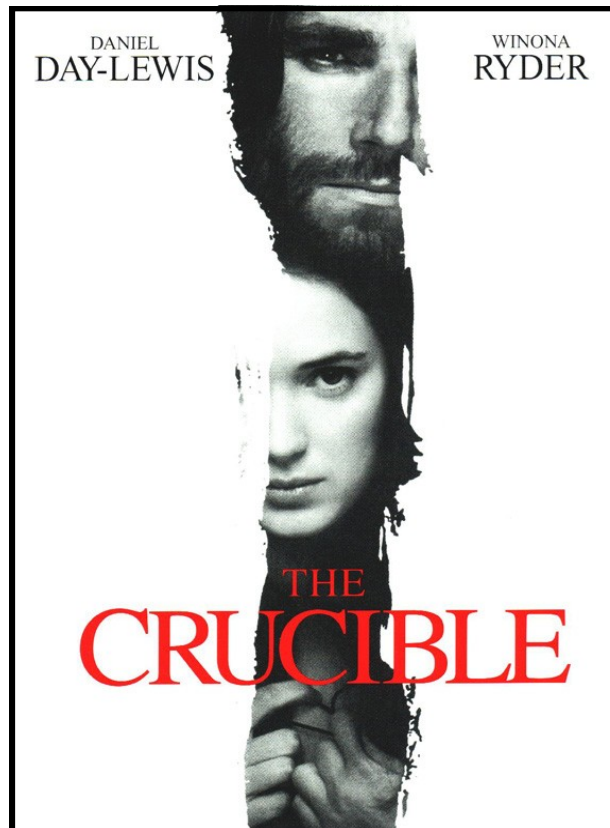
**AUGUST 3**  
**THE CRUCIBLE**

**IN CONNECTION WITH THE**  
**2007 HIGH PLAINS CHAUTAUQUA**

This discussion will be co-hosted by  
**Ron Edgerton and Gail Rowe.**

Based on the famous Arthur Miller play, this film is set during the 17th-Century Salem witch trials. A well-acted portrayal of suspicion, passion, manipulation, and fear, *The Crucible* still stirs our thoughts in 21st-Century America.

**(Rated PG-13)**



**SEPTEMBER 7**  
**PAN'S LABYRINTH**  
**(EL LABERINTO DEL FAUNO)**

In Spanish with English subtitles.

A unique blending of reality and fantasy, this award-winning film spins a spellbinding fable. Told through the eyes of a young girl whose imaginary world is inhabited by nightmarish creatures, *Pan's Labyrinth* is a visually stunning allegorical tale about the fears faced in Spain during World War II.

**(Rated R—anyone under 17 must be accompanied by an adult)**



**Location**  
**FARR BRANCH, MEETING ROOM**  
1939 61st Ave. Greeley

**Date**  
**FIRST FRIDAY OF EACH MONTH**  
(unless otherwise noted)

**Time**  
**6:30PM**

**Cost**  
**FREE**

**(POPCORN, SODA, COFFEE AVAILABLE)**

**\*Please Note\***  
For R-rated films,  
anyone under 17 must be accompanied by  
an adult.

**See you at the movies!**

For more information, call Jamie at 506-8526.

Please join us as we **EXPLORE** and **DISCUSS**  
a variety of film genres! Viewing films is a  
great way to **RELAX**, build **COMMUNITY**, and  
**EXPAND** your worldview.

## BRANCH LIBRARIES

**Carbon Valley Branch**  
320 Maple St., #B, Frederick 80530  
(303) 833-3510

**Centennial Park Branch**  
2227 23rd Ave., Greeley 80634  
(970) 506-8600

**Farr Branch**  
1939 61st Ave., Greeley 80634  
(970) 506-8500

**Lincoln Park Branch**  
919 7th St., Suite A, Greeley 80631  
(970) 506-8460

**Outreach/Bookmobile**  
2227 23rd Ave., Greeley 80634  
(970) 506-8640  
Toll Free  
1-800-331-7182

## MEMBER LIBRARIES

**Eaton Public Library**  
132 Maple Ave., Eaton 80615  
(970) 454-2189

**Fort Lupton Public and School Library**  
425 S. Denver Ave., Ft. Lupton 80621  
(303) 857-7180

**Glenn A. Jones, M.D.  
Memorial Library**  
400 S. Parish Ave., Johnstown 80534  
(970) 587-2459

**Hudson Public Library**  
555 Main St., Hudson 80642  
(303) 536-4550

**Northern Plains Public Library**  
216 2nd St., Ault 80610  
(970) 834-1259

**Platteville Public Library**  
504 Marion Ave., Platteville 80651  
(970) 785-2231

**AFFILIATED LIBRARY**  
**Wellspring Library at NCMC**  
1801 16th St., Greeley 80631  
(970) 350-6074

**NOW  
SHOWING...**

**AT A LIBRARY  
NEAR YOU!**

Please join us for our monthly  
Adult Program  
**Film  
Discussion  
Group.**

**FILM SCHEDULE**  
July to September 2007